



Meaningful Innovation.

WEEE Number: 80133970

# INSTRUCTION MANUAL

## GU10 GYPSUM FITTING ROUND

### TECHNICAL DATA

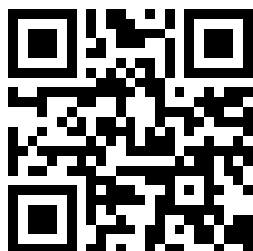
MODEL	VT-716RD
SKU	3667
MAX WATTS	35W (Spotlight not included)
INPUT VOLTAGE	AC 220-240, 50Hz
SHAPE	ROUND
BASE	GU10
INSTALLATION TYPE	Surfaced
OPERATION TEMPERATURE	-25°C to +50°C
IP RATING	IP20
UNIT COLOR	WHITE
DIMENSION	Ø75x75mm
BODY TYPE	GYPSUM



**02** YEAR  
**WARRANTY\***

### INTRODUCTION & WARRANTY

Thank you for selecting and buying V-TAC product. V-TAC will serve you the best. Please read these instructions carefully before starting the installation and keep this manual handy for future reference. If you have any another query, please contact our dealer or local vendor from whom you have purchased the product. They are trained and ready to serve you at the best. The warranty is valid for 2 years from the date of purchase. The warranty does not apply to damage caused by incorrect installation or abnormal wear and tear. The company gives no warranty against damage to any surface due to incorrect removal and installation of the product.



#### MULTI-LANGUAGE MANUAL QR CODE

Please scan the QR code to access the manual in multiple languages.

## WARNING

- Please make sure to turn off the power before starting the installation.
- Installation must be performed by a qualified electrician.
- For Indoor use only

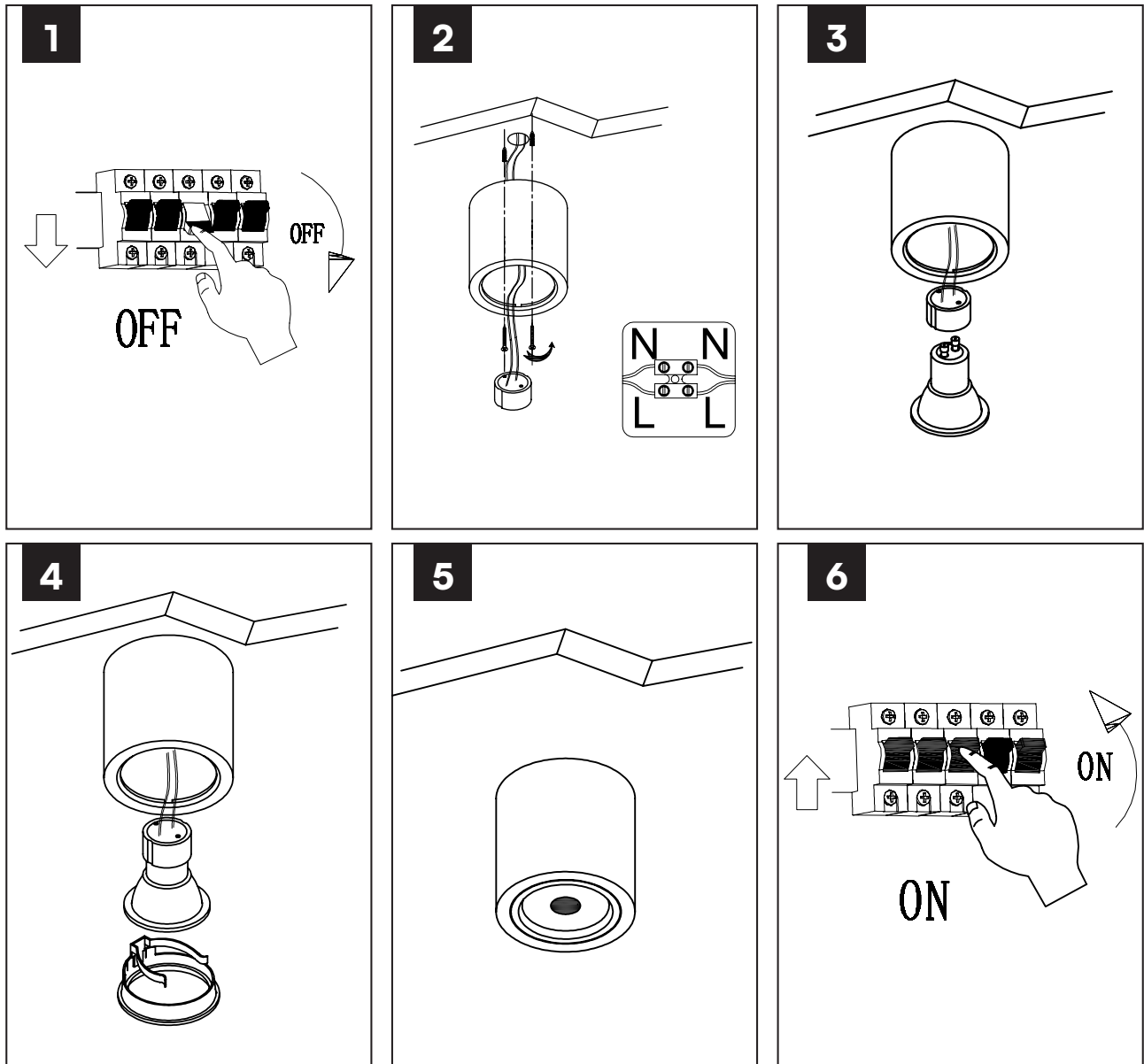


This marking indicates that this product should not be disposed of with other household wastes.



Caution, Risk of electric shock

## INSTALLATION DIAGRAM



## INSTALLATION INSTRUCTION

1. Drill two holes on the wall and insert two plastic expansion bolts in it.
2. Fix the fitting on the plastic expansion piece with self-tapping screws.
3. Connect the wires according to the diagram.
4. Install the GU10 Spot light into the holder.
5. Attach the bottom cap
6. Switch on the power and test the lamp.

RoHS



UK  
CA

