

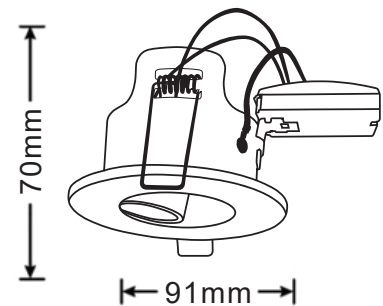
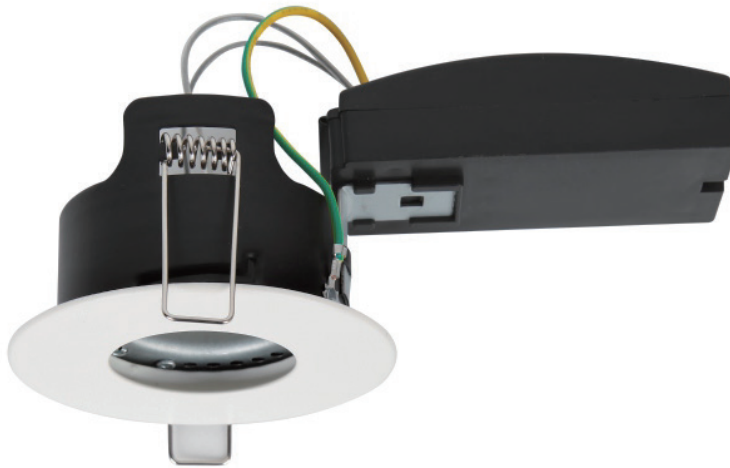


Meaningful Innovation.

WEEE Number: 80133970

INSTRUCTION MANUAL

CANLESS FIRE RATED GU10 FITTING



03 YEAR
WARRANTY*

TECHNICAL DATA

MODEL	VT-701CL	VT-702CL
SKU	76781, 76811, 76801, 76791	76841, 76831, 76851, 76821
INPUT POWER	AC:200-240V, 50HZ	AC:200-240V, 50HZ
BODY TYPE	PRESSED STEEL	PRESSED STEEL
DIMENSION	91X70MM	91X70MM
CUTTING SIZE	75 MM	75 MM
BASE	GU10	GU10
SHAPE	ROUND	ROUND
INSTALLATION TYPE	RECESSED	RECESSED
IP RATING	IP20	IP65



INTRODUCTION & WARRANTY

Thank you for selecting and buying V-TAC product. V-TAC will serve you the best. Please read these instructions carefully before starting the installation and keep this manual handy for future reference. If you have any another query, please contact our dealer or local vendor from whom you have purchased the product. They are trained and ready to serve you at the best. The warranty is valid for 2 years from the date of purchase. The warranty does not apply to damage caused by incorrect installation or abnormal wear and tear. The company gives no warranty against damage to any surface due to incorrect removal and installation of the product. The products are suitable for 10-12 Hours Daily operation. Usage of product for 24 Hours a day would void the warranty. This product is warranted for manufacturing defects only.

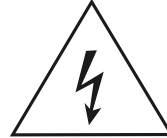
IN CASE OF ANY QUERY/ISSUE WITH THE PRODUCT PLEASE REACH OUT TO US AT
SUPPORT@VTACEXPORTS.COM V-TAC HOUSE, KELPATRICK ROAD, SLOUGH, BERKSHIRE, SL1 6BW, UK.

WARNING

1. Please make sure to turn off the power before starting the installation.
2. Installation must be performed by a qualified person.
3. For Indoor Purpose Only



This marking indicates that this product should not be disposed of with other household wastes.



Caution, risk of electric shock.

INSTALLATION INSTRUCTIONS

1. Turn off the power before installation.
2. Use the appropriate tool to cut a hole according to the specified cut-out size (75mm), as shown in Pic 2.
3. Make the electrical connections to the terminal block or quick connector, as shown in Pic 3.
4. Remove the bezel by twisting it anti-clockwise. Install the bulb into the bulb holder, then replace the bezel by twisting it clockwise, as shown in Pic 4.
5. Hold the spring clips upwards and, with the fixture hanging down, insert the fitting into the hole. Allow the springs to pull the fitting securely into the ceiling, as shown in Pic 5 and Pic 6.
6. Switch on the power and verify that the light is functioning properly.

