



Meaningful Innovation.

WEEE Number: 80133970

INSTRUCTION MANUAL

WALL LAMP

TECHNICAL DATA

MODEL	VT-1223
SKU	11823
WATTS	60W
INPUT POWER	AC:220-240V,50/60Hz
IP RATING	IP44
HOLDER	E27 [Bulb not included]
UNIT COLOR	MATTE BLACK
MATERIAL	Aluminium + PLASTIC
DIMENSION	325x200x250mm



03 YEAR
WARRANTY*

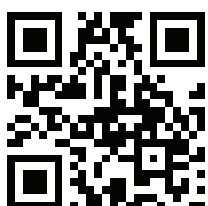
INTRODUCTION & WARRANTY

Thank you for selecting and buying V-TAC product. V-TAC will serve you the best. Please read these instructions carefully before starting the installation and keep this manual handy for future reference. If you have any another query, please contact our dealer or local vendor from whom you have purchased the product. They are trained and ready to serve you at the best. The warranty is valid for 3 years from the date of purchase. The warranty does not apply to damage caused by incorrect installation or abnormal wear and tear. The company gives no warranty against damage to any surface due to incorrect removal and installation of the product. The products are suitable for 10-12 Hours Daily operation. Usage of product for 24 Hours a day would void the warranty. This product is warranted for manufacturing defects only.!

WARNING

- Ensure Electricity is switched off before installation
- Please read through all following instruction before installing the unit.
- User should prepare necessary accessories and spare parts (Not Provided)
- Installation must be performed by a qualified electrician
- Proper grounding should be ensured throughout the installation.

RoHS  



MULTI-LANGUAGE MANUAL QR CODE

Please scan the QR code to access the manual in multiple languages.



FR

Cet appareil, ses accessoires et cordons se recyclent

À DÉPOSER EN MAGASIN



ou

À DÉPOSER EN DÉCHÈTERIE



Points de collecte sur www.quefairedemesdechets.fr
Privilégiez la réparation ou le don de votre appareil !

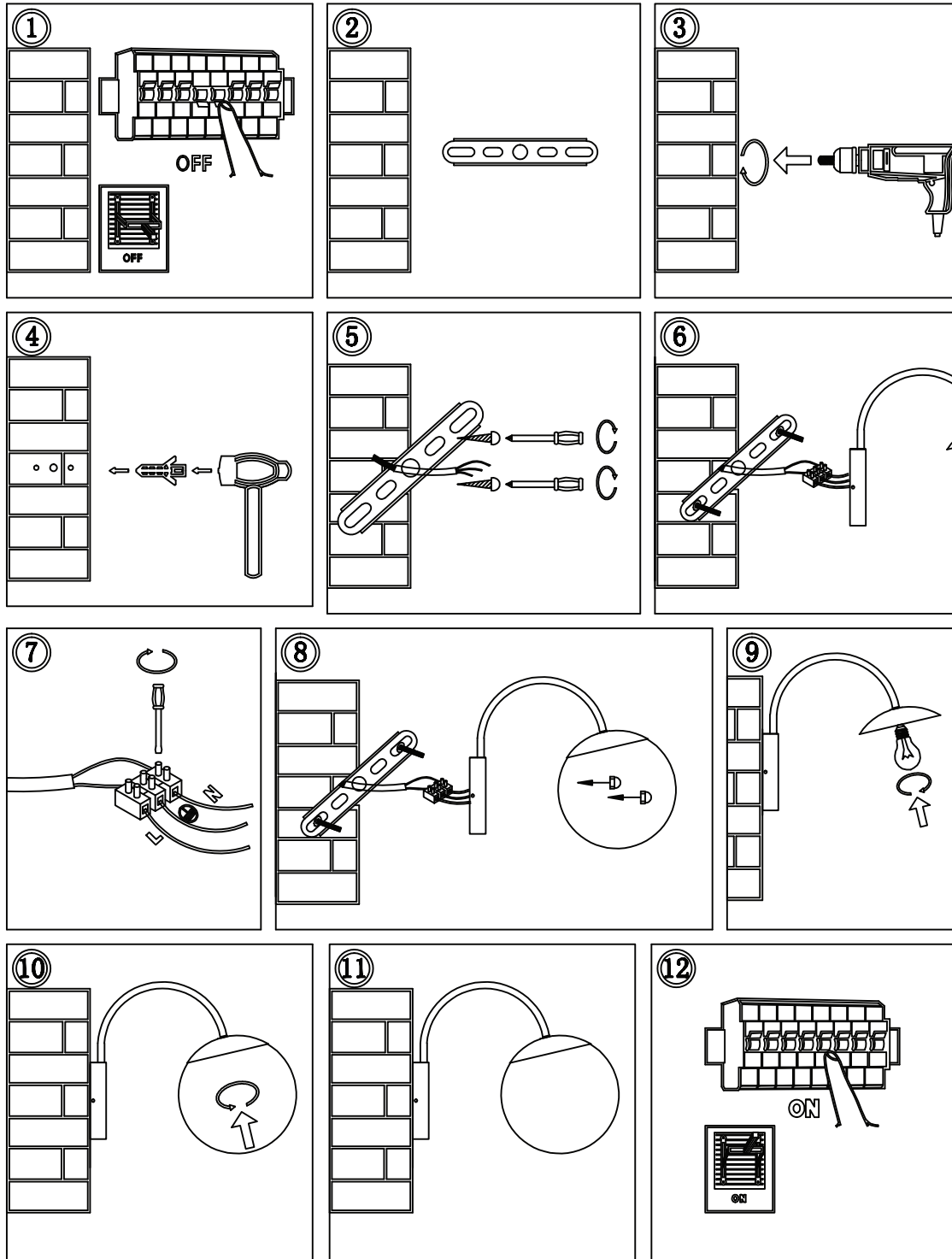


This marking indicates that this product should not be disposed of with other household wastes.



Caution, risk of electric shock.

INSTALLATION DIAGRAM



INSTALLATION INSTRUCTION

1. Turn off the power.
2. Find proper position for Plate.
3. Drill the holes in the wall.
4. Dig the plastic into the hole.
5. Fix the wall plate onto the wall.
6. Connect supply leads with terminal brown (L) to brown, blue (N) to blue and greenish-yellow () to greenish-yellow.
7. Tighten the screws to fix the wires.
8. Fix the fixture with screw.
9. Install the bulb into the lampholder.
10. Close the lamp.
11. Check whole fitting is correct.
12. Turn on the Power